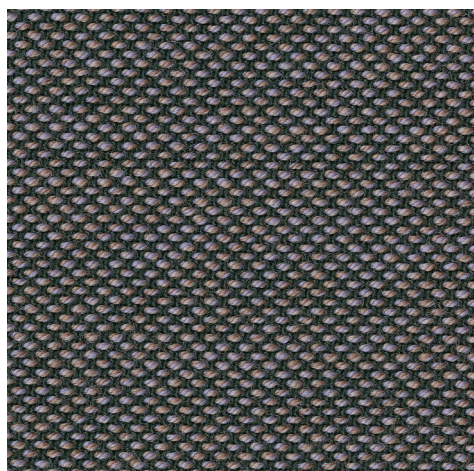


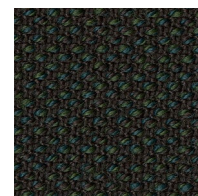
Steelcut Quartet

kvadrat

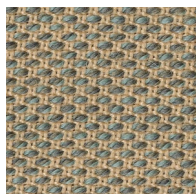
Steelcut Quartet



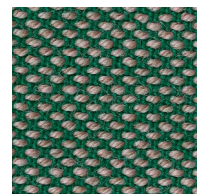
654



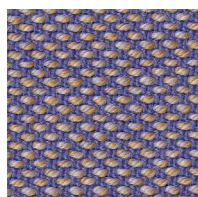
994



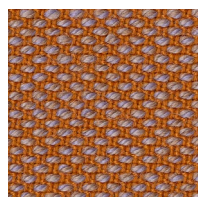
924



944



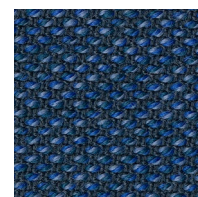
644



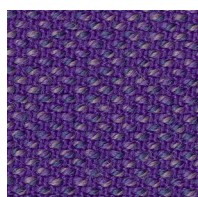
544



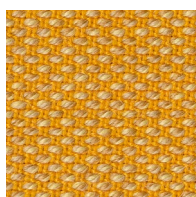
414



764



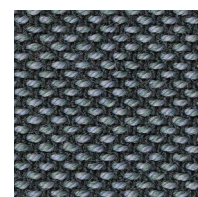
664



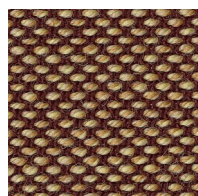
434



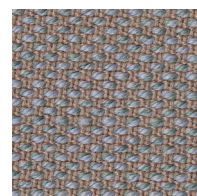
114



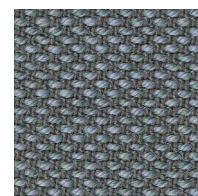
154



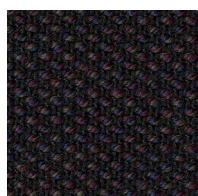
554



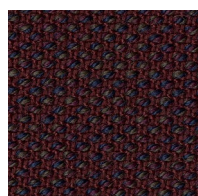
224



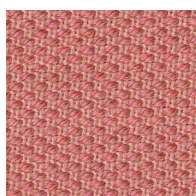
144



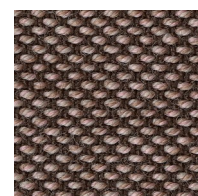
394



684



534



354

09/2022

Steelcut Quartet

Designed by Frans Dijkmeijer & Giulio Ridolfo

90% new wool, worsted 10% nylon

Direction: ↕

Width: approx. 140cm (55")

Abrasion: 100,000 Martindale

Click here for full Technical Specifications.

10^{year}
warranty

Quality and environmental system accreditation according to ISO 9001 and ISO 14001.

Contact and further information www.kvadrat.dk

US contact info: 1-800-620-9309